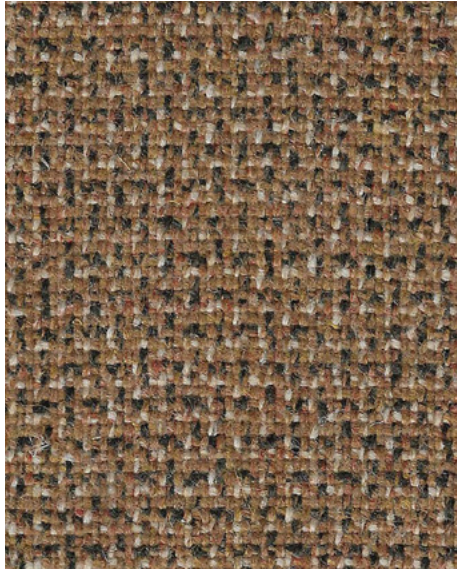


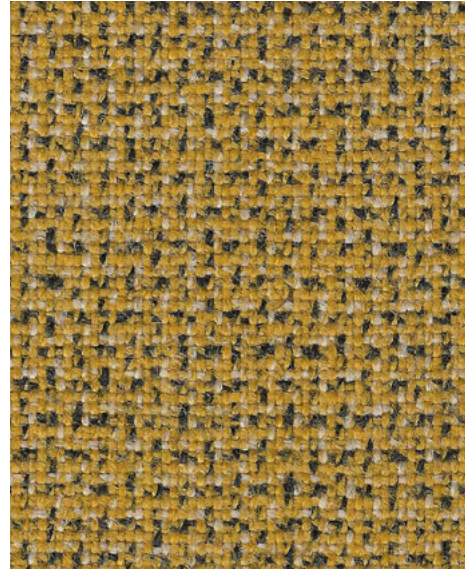


# **Sustainable by Design**

**Made from nature for sustainable interiors, Main Line Twist is a new take on tweed which complements the colour palette of Main Line Flax to create effortless textile pairings.**



**Ply**  
MLT10



**Fold**  
MLT01



**Perivale**  
MLF59



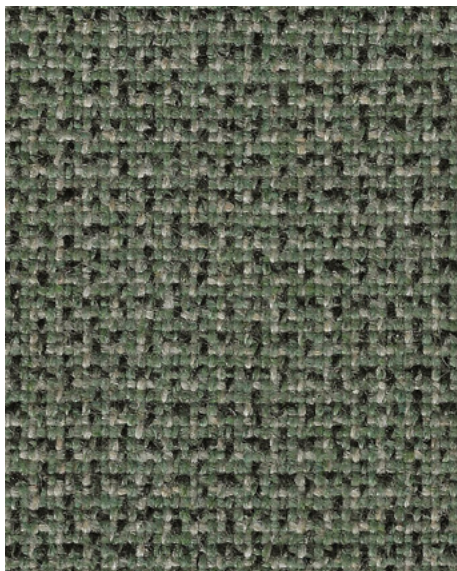
**Morden**  
MLF12



**Upminster**  
MLF20



**Tooting**  
MLF17



**Blend**  
MLT11



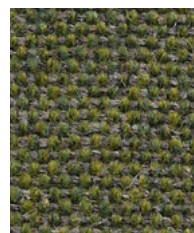
**Creel**  
MLT09



**Monument**  
MLF09



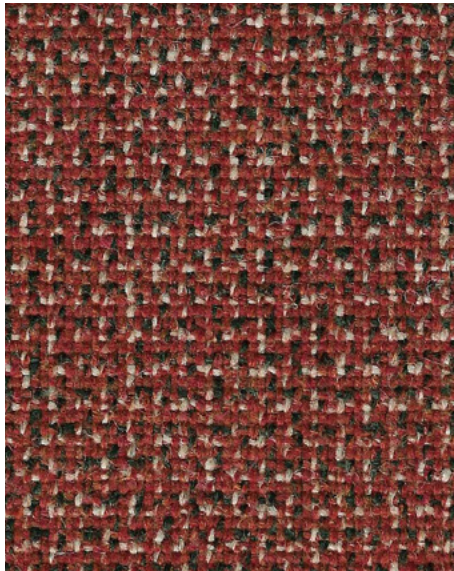
**Greenwich**  
MLF52



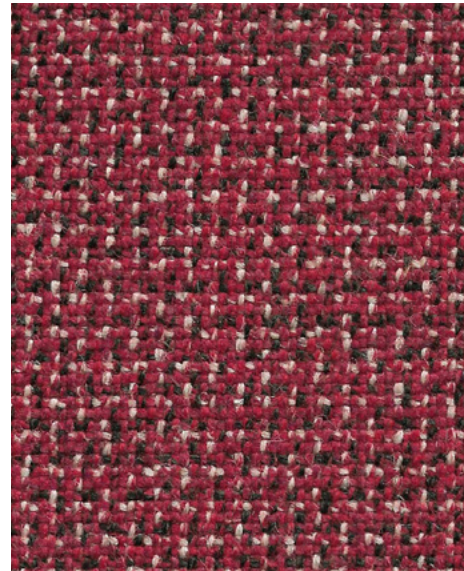
**Moorgate**  
MLF57



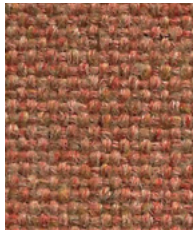
**Kentish**  
MLF56



**Cone**  
MLT02



**Spool**  
MLT03



**Alperton**  
MLF43



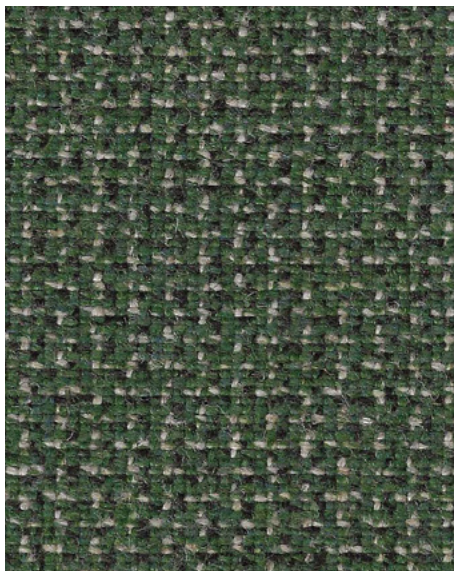
**Barking**  
MLF45



**Kilburn**  
MLF06



**Parsons**  
MLF14



**Card**  
MLT08



**Spin**  
MLT12



**Harrow**  
MLF54



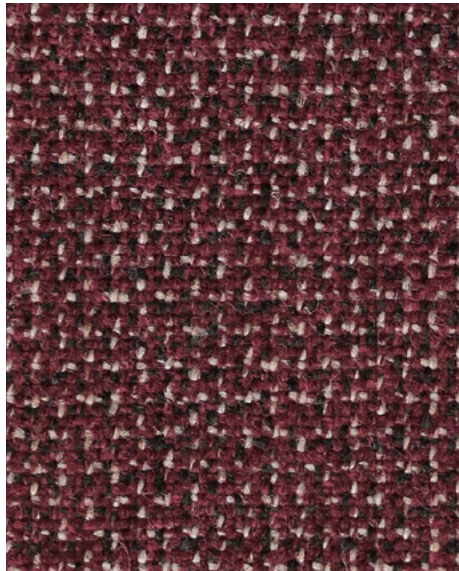
**Hornchurch**  
MLF55



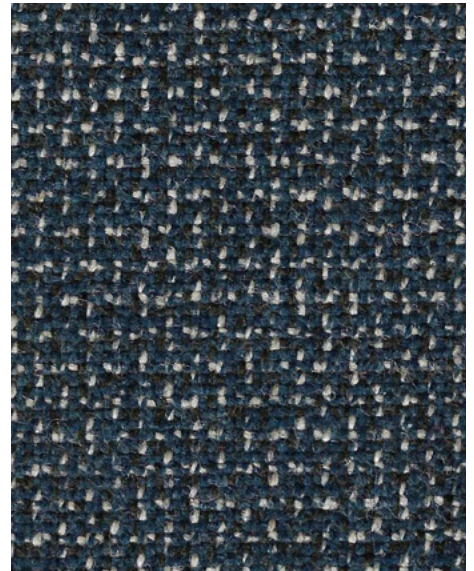
**Redbridge**  
MLF61



**Camden**  
MLF26



**Crimp**  
MLT06



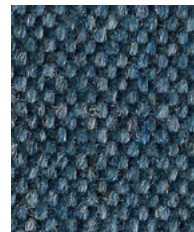
**Fibre**  
MLT05



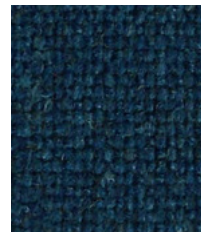
**Blackwall**  
MLF46



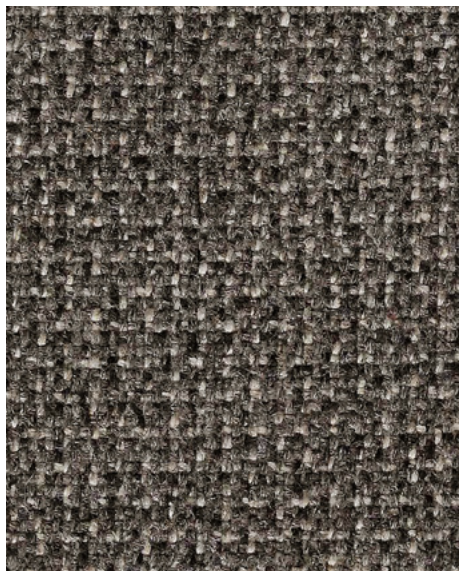
**Northfields**  
MLF40



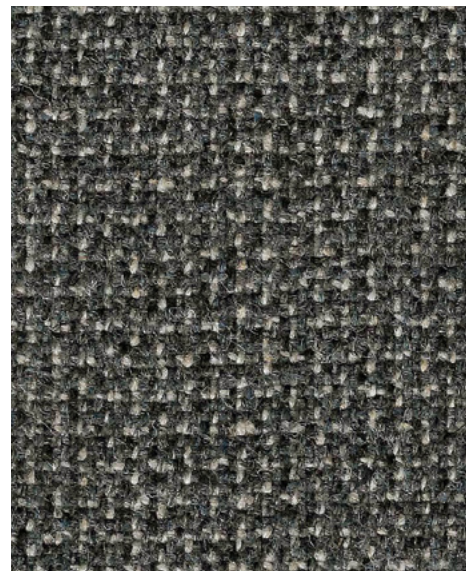
**Clapham**  
MLF49



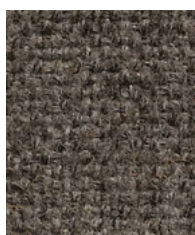
**Embankment**  
MLF50



**Hank**  
MLT13



**Micron**  
MLT14



**Richmond**  
MLF62



**Temple**  
MLF16

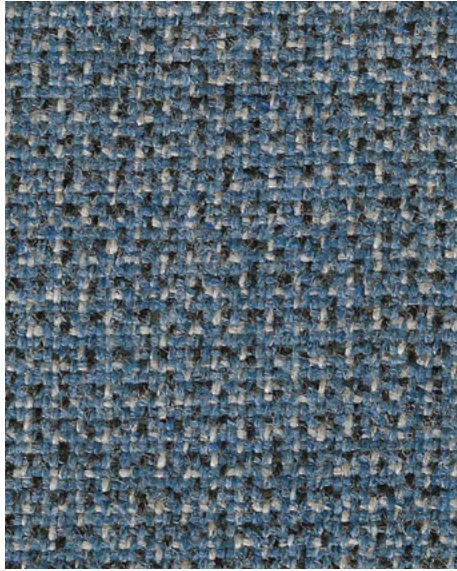


**Stratford**  
MLF64



**Whitechapel**  
MLF66

Photographic fabric scans are not colour accurate. Always request actual fabric samples before ordering.



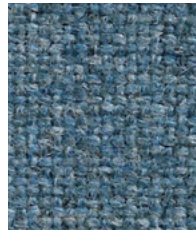
**Yarn**  
MLT04



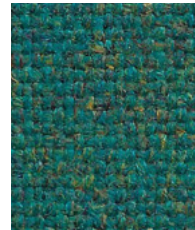
**Scour**  
MLT07



**Waterloo**  
MLF21



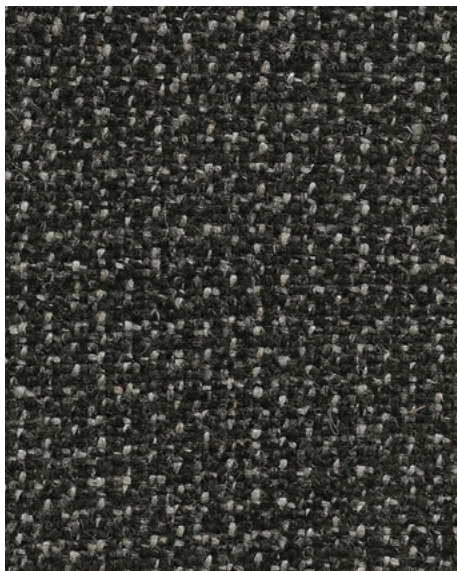
**Epping**  
MLF51



**Stanmore**  
MLF37



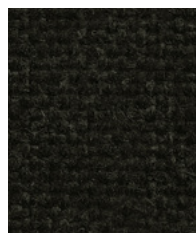
**Bayswater**  
MLF24



**Slub**  
MLT15



**Shadwell**  
MLF63



**Edgware**  
MLF28



Task seating



Soft seating



Panels



Curtains

Cigarette  
& Match

Medium Hazard

IMO FTP Code  
(Part 8)

Environmental



Acoustic



Year guarantee

Woven from a blend of wool and flax, Main Line Twist is a tweed effect textile with a beautiful, handwoven appearance. Multi-tonal yarns create a fabric with impossible-to-define colour detail, rich in warmth and texture.

Made to pair with Main Line Flax, these two textiles are natural partners.



## Technical information

### UK

#### Composition

75% Virgin Wool, 25% Flax

#### Environment

Certified to the EU Ecolabel  
Certified to Indoor Advantage™ Gold  
Rapidly renewable and compostable  
Made from wool and plant fibre

#### Width

140 cm minimum

#### Weight

437g/m<sup>2</sup> ±5% (612g/lin.m ±5%)

#### Abrasion Resistance\*

Heavy duty / 10 year guarantee  
Independently certified to ≥50,000  
Martindale cycles

#### Flammability

EN 1021 - 1 (cigarette)  
EN 1021 - 2 (match)  
BS 7176 Low Hazard  
BS 5852 Ignition Source 5  
BS 7176 Medium Hazard  
NF D 60-013  
ÖNORM B 3825 & A 3800-1  
(58kg/m<sup>3</sup> CMHR Foam)  
UNI 9175 Classe 1 IM  
BS 476 Part 7 Class 1 (Adhered)  
EN 13501-1 Adhered Class B, s1 ,d0  
BS 5867-2: Type B Curtains & Drapes  
IMO FTP Code (Part 8)  
The Furniture and Furnishing (Fire Safety)  
Regulations 1988 (UK domestic cigarette  
and match)  
*Note: Flammability performance is  
dependent on components used. Our  
certificates show what substrates have been  
used in our tests. For composite tests  
customers must ensure their complete  
furniture meets the necessary standards.*

#### Light Fastness

4-5 (ISO 105 - B02)

#### Fastness to Rubbing

Wet: 3, Dry: 4 (ISO 105 - X12)

#### Acoustic Properties

Acoustically transparent. Acoustic graphs  
available upon request

#### Cleaning

Vacuum regularly. Wipe with a damp cloth  
using a proprietary upholstery shampoo/  
soap. For deeper cleaning use steam or  
professionally dry clean. Full details can be  
found in our cleaning and disinfection  
guide.

### D

#### Zusammensetzung

75% Schurwolle, 25% Flachs

#### Umweltfreundlich

Nach Zertifikat EU Ecolabel  
Nach Zertifikat Indoor Advantage™ Gold  
Schnell erneuerbar und kompostierbar  
Mit Wolle und Pflanzfasern gefertigt

#### Breite

140 cm nutzbare Breite

#### Gewicht

437g/m<sup>2</sup> ±5% (612g/lfd.m ±5%)

#### Scheuerfestigkeit\*

Schwerer Objekteinsetz / 10 Jahre  
Garantie. Extern zertifiziert mit ≥50,000  
Scheuertouren Martindale

#### Feuersicherung

EN 1021 - 1 (Zigarettentest)  
EN 1021 - 2 (Streichholztest)  
BS 7176 Low Hazard  
BS 5852 Ignition Source 5  
BS 7176 Medium Hazard  
NF D 60-013  
ÖNORM B 3825 & A 3800-1  
(mit 58kg/m<sup>3</sup> CMHR Schaum)  
UNI 9175 Classe 1 IM  
BS 476 Part 7 Class 1 (Adhered)  
EN 13501-1 Adhered Class B, s1 ,d0  
BS 5867-2: Type B Curtains & Drapes  
IMO FTP Code (Part 8)  
The Furniture and Furnishing (Fire Safety)  
Regulations 1988 (UK Wohnmöbel  
Zigarettentest und Streichholztest)  
*Bemerkung: Die Schwerentflammbarkeit  
hängt von den verwendeten Komponenten  
ab. Unsere Zertifikate zeigen auf, welche  
Substrate bei den Tests verwendet wurden.  
Bei Verbundtests muss sichergestellt  
sein, daß das komplette Möbel den  
entsprechenden Standards entspricht.*

#### Lichtechtheit

4-5 (ISO 105 - B02)

#### Reibechtheit

Nass: 3, Trocken: 4 (ISO 105 - X12)

#### Akustische Eigenschaften

Akustisch durchlässig. Akustische  
Messwerte auf Anfrage

#### Reinigung

Regelmässig absaugen. Mit einem  
feuchten Tuch abwischen oder mit einem  
geeigneten Polstershampoo behandeln.  
Für eine Grundreinigung bitte Dampf oder  
professionelle Trockenreinigung  
verwenden. Weitere Informationen finden  
Sie in unserem Leitfaden zur Reinigung  
und Pflege.

### F

#### Composition

75% Laine Vierge, 25% Lin

#### Écologique

Avec le certificat EU Ecolabel  
Certifié à Indoor Advantage™ Gold  
Rapidement renouvelable et compostable  
Fabriqué avec de la Laine et des fibres  
originaire de Tiges

#### Largeur

140 cm minimum

#### Poids

437g/m<sup>2</sup> ±5% (612g/m.l ±5%)

#### Résistance à l'abrasion\*

Usage intense / garantie 10 ans. Certificat  
indépendant ≥50,000 cycles Martindale

#### Flammabilité

EN 1021 - 1 (cigarette)  
EN 1021 - 2 (allumette)  
BS 7176 Low Hazard  
BS 5852 Ignition Source 5  
BS 7176 Medium Hazard  
NF D 60-013  
ÖNORM B 3825 & A 3800-1  
(sur 58kg/m<sup>3</sup> CMHR mousse)  
UNI 9175 Classe 1 IM  
BS 476 Part 7 Class 1 (Adhered)  
EN 13501-1 Adhered Class B, s1 ,d0  
BS 5867-2: Type B Curtains & Drapes  
IMO FTP Code (Part 8)  
The Furniture and Furnishing (Fire Safety)  
Regulations 1988 (UK domicile cigarette  
et allumette)  
*Notez: La performance de flammabilité  
dépend des composantes utilisées. Nos  
certificats indiquent les substrats utilisés  
dans nos tests. Pour les tests composites,  
les clients doivent s'assurer que leurs  
meubles complets satisfont aux normes  
nécessaires.*

#### Solidité à la lumière

4-5 (ISO 105 - B02)

#### Solidité au Frottement

Mouillé: 3, Sec: 4 (ISO 105 - X12)

#### Propriétés Acoustiques

Acoustiquement transparent. Graphiques  
acoustiques disponibles sur demande

#### Nettoyage

Passez l'aspirateur régulièrement. Essayez  
avec un chiffon humide en utilisant un  
shampooing/savon pour tissus  
d'ameublement exclusif. Pour un nettoyage  
en profondeur, utilisez la vapeur ou un  
nettoyage à sec professionnel. Vous  
trouverez tous les détails dans notre guide  
de nettoyage et de désinfection.

### ES

#### Composición

75% Lana Virgen, 25% Lino

#### Ambiental

Certificado con EU Ecolabel  
Certificado de Indoor Advantage™ Gold  
Rapidamente renovable y compostable  
Producido con lana y fibras naturales

#### Ancho

140 cm mínimo

#### Peso

437g/m<sup>2</sup> ±5% (612g/lin.m ±5%)

#### Resistencia a la abrasión\*

Garantía de 10 años con uso intenso  
independientemente del certificado de  
≥50,000 Ciclos Martindale

#### Inflamabilidad

EN 1021 - 1 (cigarillo)  
EN 1021 - 2 (cerilla)  
BS 7176 Low Hazard  
BS 5852 Ignition Source 5  
BS 7176 Medium Hazard  
NF D 60-013  
ÖNORM B 3825 & A 3800-1  
(con CMHR 58kg/m<sup>3</sup> de espuma)  
UNI 9175 Classe 1 IM  
BS 476 Part 7 Class 1 (Adhered)  
EN 13501-1 Adhered Class B, s1 ,d0  
BS 5867-2: Type B Curtains & Drapes  
IMO FTP Code (Part 8)  
The Furniture and Furnishing (Fire Safety)  
Regulations 1988 (UK doméstico cigarillo  
y cerilla)  
*Nota: El rendimiento de la inflamabilidad  
depende de los componentes usados.  
Nuestros certificados muestran qué  
substratos se han usado en nuestros tests.  
Para tests compuestos nuestros clientes  
deben asegurar si sus muebles cumplen la  
normativa al uso.*

#### Solidez a la luz

4-5 (ISO 105 - B02)

#### Solidez al rozamiento

Húmedo: 3, Seco: 4 (ISO 105 - X12)

#### Acústico Propiedades

Acústicamente transparente. Gráficos  
acústicos disponibles bajo petición

#### Limpieza

Uso aspirador regularmente. Limpiar con  
un trapo usando jabón y agua o producto  
limpieza para tapicerías. Para una limpieza  
más profunda usen vapor o limpieza  
en seco profesional. Los detalles completos  
se encuentran en nuestra guía de limpieza  
y desinfección.

Camira fabrics are  
brought to Australasia  
by Textilia

camira

at work\*  
with  
Camira

AUSTRALIA  
telephone: 1800 173209  
web: atworkwithcamira.com  
email: sales@atworkwithcamira.com  
\*at work is a brand of Textilia

at work\*  
with  
Camira

NEW ZEALAND  
telephone: +64 9 3023182  
web: textilia.co.nz  
email: info@textilia.co.nz  
\*at work is a brand of Textilia